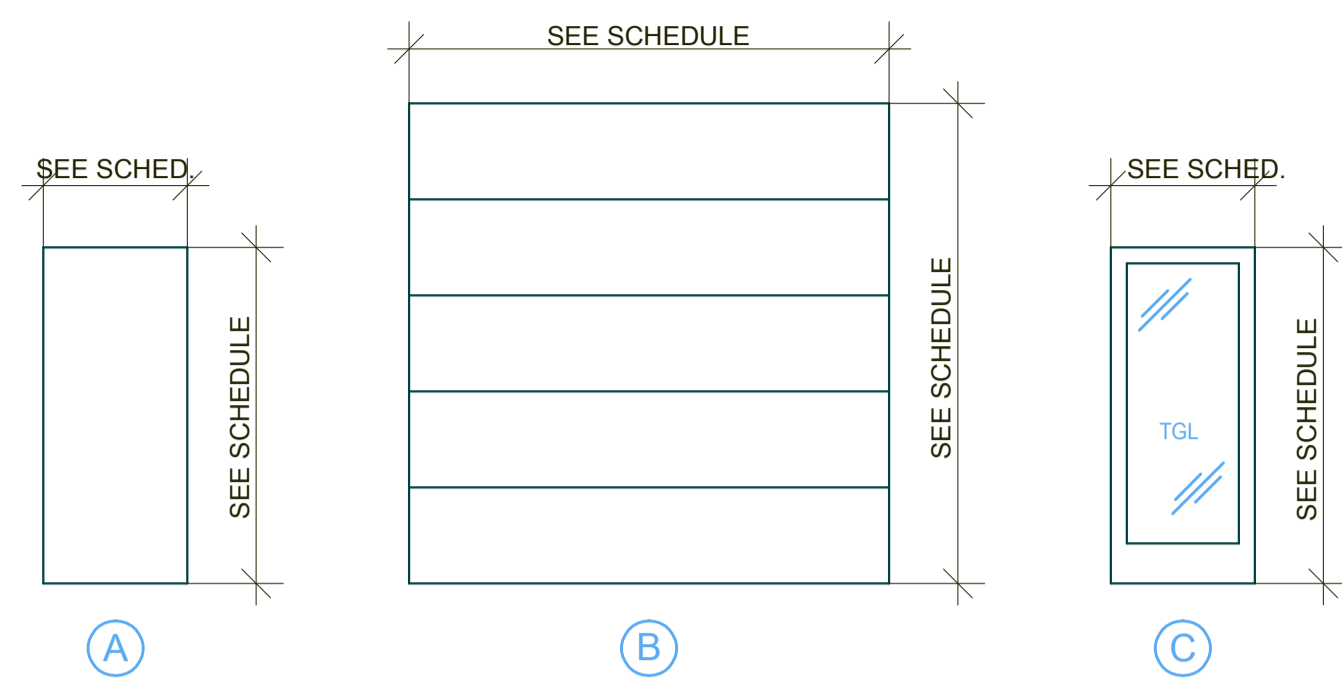
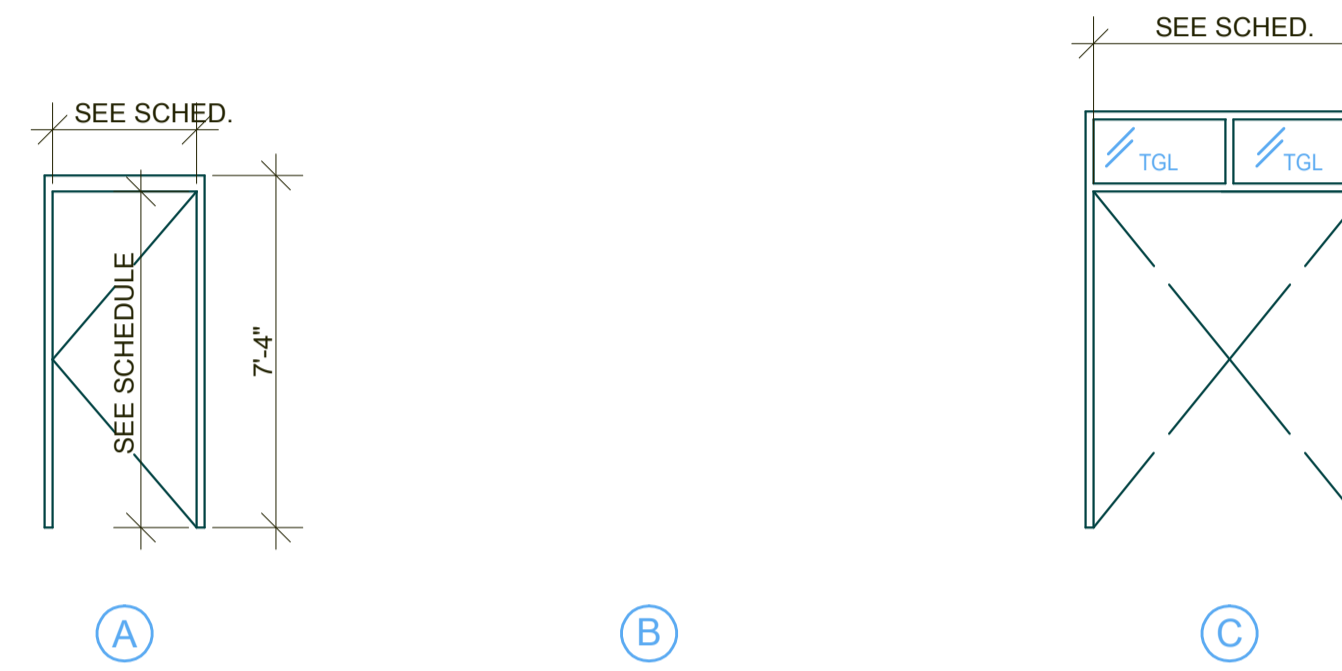


DOOR & FRAME SCHEDULE											
No.	LOCATION	Door			Frame			HDWR	KEY	REMARKS	
		SIZE	TYPE	MATERIAL	FINISH	TYPE	MATERIAL				FINISH
100	UTILITY ROOM	3'-0" x 7'-0"	A	HM	P	A	HM	P	1	GALVANIZED METAL FOR EXT. USE	
101	UTILITY ROOM									EXISTING DOOR AND FRAME TO REMAIN	
102	STORAGE ROOM	8'-4" x 7'-4"	B							MANUAL OPERATED VERTICAL LIFT DOOR	
103	STORAGE ROOM	3'-0" x 7'-0"	A	HM	P	A	HM	P	1	GALVANIZED METAL FOR EXT. USE	
104	CORRIDOR 102	6'-0" x 7'-4"	B							MANUAL OPERATED VERTICAL LIFT DOOR	
105	OFFICE 104	3'-0" x 7'-0"	A	HM	P	A	HM	P	2	GALVANIZED METAL FOR EXT. USE	
106	CORRIDOR 102	(2) 2'-10" x 7'-0"	C	ALUM	SPEC.	C	ALUM	SPEC.	3		
107	OFFICE 103	3'-0" x 7'-0"	A	HM	P	A	HM	P	4	GALVANIZED METAL FOR EXT. USE	
108	RESTROOM 105	3'-4" x 7'-4"	B							MANUAL OPERATED VERTICAL LIFT DOOR	
109	RESTROOM 106	3'-4" x 7'-4"	B							MANUAL OPERATED VERTICAL LIFT DOOR	
110	CONCESSIONS	3'-0" x 7'-0"	A	HM	P	A	HM	P	1	GALVANIZED METAL FOR EXT. USE	
111	UNISEX REST ROOM	3'-0" x 7'-0"	A	HM	P	A	HM	P	5	GALVANIZED METAL FOR EXT. USE	



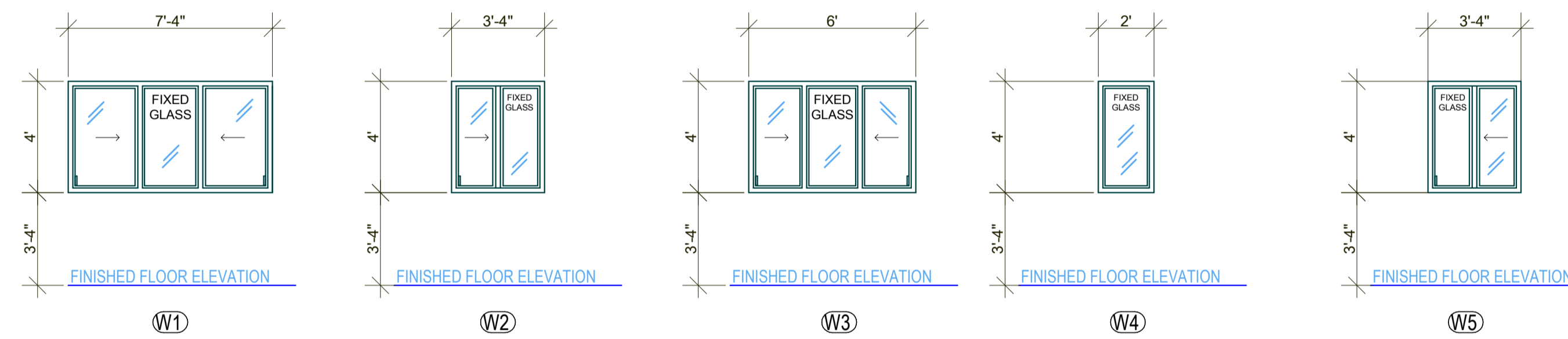
DOOR TYPES

* FIELD VERIFY ALL DIMENSIONS*



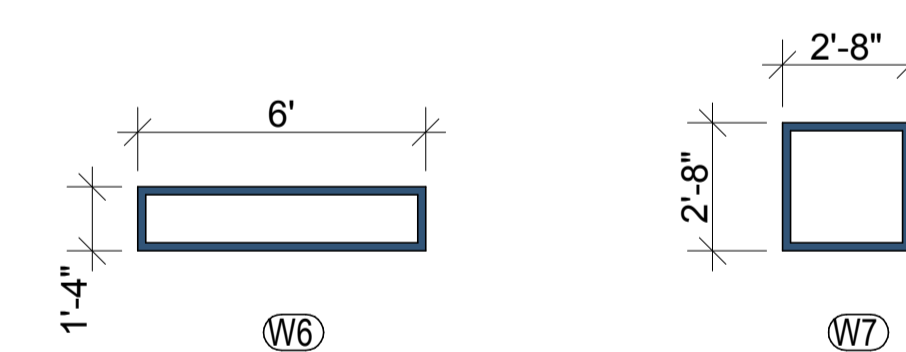
DOOR FRAMES

* FIELD VERIFY ALL DIMENSIONS*



WINDOW TYPES

* FIELD VERIFY ALL DIMENSIONS*



WINDOW TYPES

* FIELD VERIFY ALL DIMENSIONS*

DOOR & HARDWARE ABBREVIATIONS:

ALUM	ALUMINUM	OCG	OVERHEAD COILING GRILLE
ANOD	ANODIZED	P	PAINT
CLR	CLEAR	SCWD	SOLID CORE WOOD
EXIST	EXISTING	SSHM	STAINLESS STEEL HOLLOW METAL
GM	GALVANIZED METAL	ST	STAIN
HM	HOLLOW METAL	STL	STEEL
N/A	NOT APPLICABLE	TGL	TEMPERED/SAFETY GLASS
OCD	OVERHEAD COILING DOOR	WD	WOOD
OSG	OPAQUE SPANDREL GLASS	FGL	FIBERGLASS
		SPEC.	SPECIAL ORDER

DOOR & HARDWARE GENERAL NOTES:

- ALL HARDWARE SHALL MEET ADA REQUIREMENTS
- EXIT HARDWARE SHALL ALLOW FOR EGRESS AT ALL TIMES WITHOUT THE USE OF A KEY OR SPECIAL KNOWLEDGE. SEE DOOR SCHEDULE FOR SPECIFIC HARDWARE FUNCTIONS.
- TEMPERED SAFETY GLASS SHALL BE INSTALLED IN ALL DOORS
- ALL HOLLOW METAL DOOR FRAMES, SIDELIGHTS, WINDOWS, ETC. SHALL BE WELDED
- HARDWARE SHALL HAVE U.S. 26D FINISH UNLESS NOTED OTHERWISE.
- FIELD VERIFY ALL WINDOW AND DOOR OPENINGS PRIOR TO INSTALLATION.
- ALL HARDWARE TO BE COMMERCIAL AND EXTERIOR GRADE.
- DOOR CONTRACTOR TO SUBMIT CUT SHEETS FOR ALL WINDOWS AND DOORS TO ARCHITECT FOR APPROVAL PRIOR TO ANY PURCHASING OR INSTALLATION.

HARDWARE SET # 1

QUANTITY	ITEM
1-1/2	PAIR HINGES W/ NON-REMOVABLE PINS
1	MORTISE LOCKSET - STORE ROOM DEADBOLT WITH KEY FUNCTION FROM OUTSIDE
1	CLOSER
1	THRESHOLD (1/2" HIGH MAX.)
1	WEATHERSTRIP SET
1	DRIP CAP

HARDWARE SET # 2

QUANTITY	ITEM
1-1/2	PAIR HINGES
1	LOCKSET - OFFICE FUNCTION
1	WALL OR FLOOR STOP
1	SILENCER SET

HARDWARE SET # 3

QUANTITY	ITEM
-	HINGES BY DOOR MANUF.
1	KEYED CYLINDER LOCK, PUSH PADDLE EXIT DEVICE BY DOOR MANUF.,
2	CLOSERS BY DOOR MANUF.
1	THRESHOLD BY DOOR MANUF. (1/2" HIGH MAX.)
1	WEATHERSTRIP SET
2	PULL HANDLES, BY DOOR MANUF.

HARDWARE SET # 4

QUANTITY	ITEM
1-1/2	PAIR HINGES
1	LOCKSET - OFFICE FUNCTION
1	COAT HOOK
1	WALL OR FLOOR STOP
1	SILENCER SET

HARDWARE SET # 5

QUANTITY	ITEM
1-1/2	PAIR HINGES W/ NON-REMOVABLE PINS
1	LOCKSET - PRIVACY FUNCTION
1	CLOSER
1	THRESHOLD (1/2" HIGH MAX.)
1	WEATHERSTRIP SET
1	DRIP CAP

Owner:

Hidden Valley Lake POA
19303 Schmitt Drive
Lawrenceburg, IN 47025

ALLIED ARCHITECTURE
JADE RITTER, AIA, LEED AP
129 N. MAIN STREET
BATESVILLE, IN 47006
812-934-6678
JRITTER@ALLIEDARCHITECT.COM

Revisions:

HIDDEN VALLEY LAKE - POOL HOUSE
HIDDEN VALLEY LAKE POOL
20698 LAKEVIEW DRIVE
LAWRENCEBURG, INDIANA 47025

Date:

09-14-11

Title:

SCHEDULES

A-5.1