

ROOF FRAMING PLAN

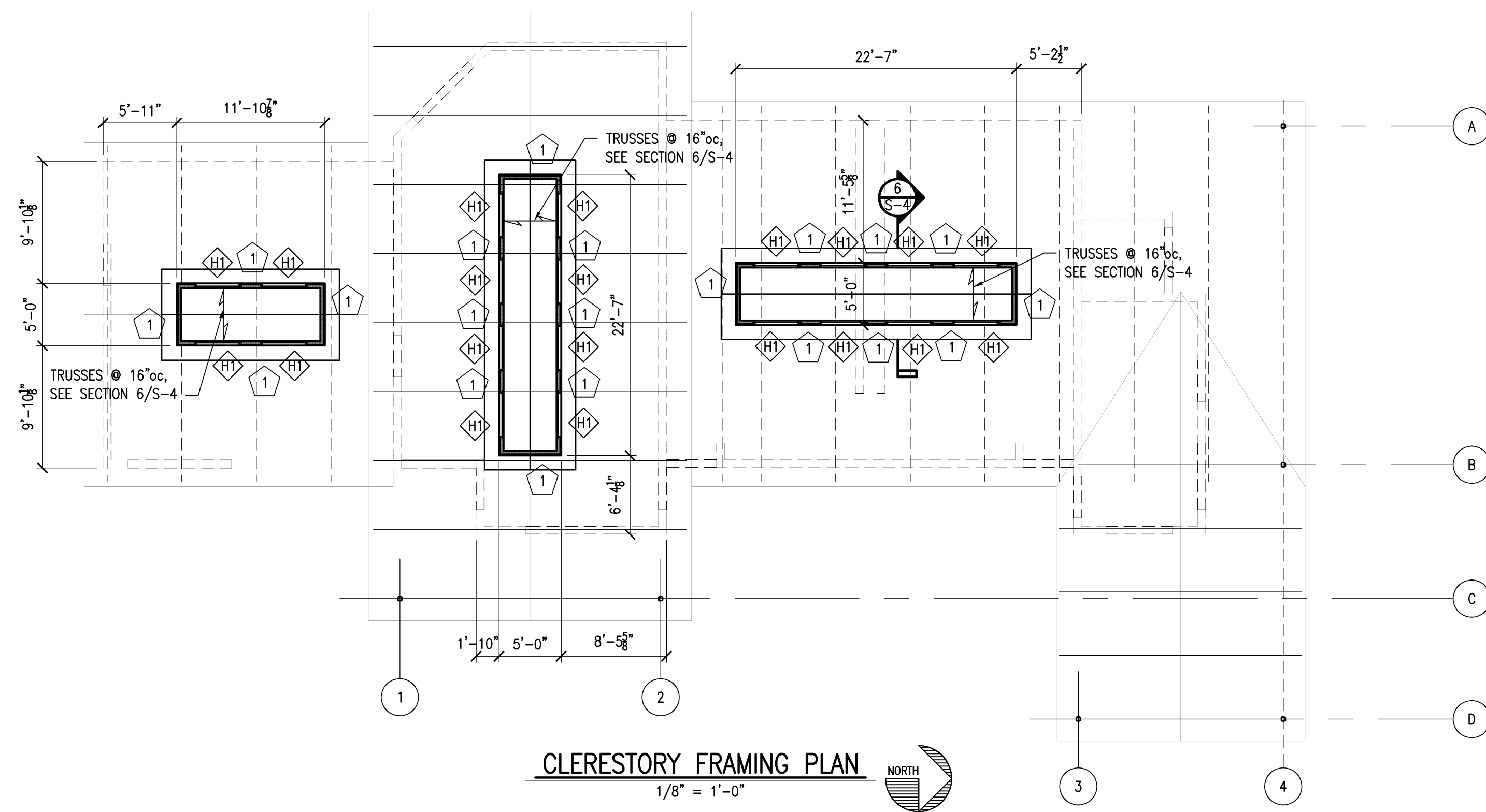
1/8" = 1'-0"

NOTES:

- 1/STEEL BEAM EL 109'-4" UNLESS NOTED (±?-'??") ON PLAN.
- JOIST MANUFACTURER:
 - a. ROOF JOISTS & JOIST CHORDS ARE SUBJECT TO A NET UPLIFT DUE TO WIND, SEE GENERAL NOTES FOR DESIGN NET UPLIFT.
 - b. DESIGN GSP JOISTS FOR UNIFORM LOAD AS STATED IN "DESIGN LOADS" PLUS THE LOADS AS SHOWN IN THE DETAIL ON S-2.
- DECKING IS TO BE CONTINUOUSLY SUPPORTED AT EACH END OF DECK SPAN. PROVIDE ADDITIONAL L3x3x1/2 DECK SUPPORT WHERE REQUIRED UNO.
- DOORS AND WINDOWS ARE SHOWN IN APPROXIMATE LOCATIONS, SEE ARCHITECTURAL DRAWINGS FOR EXACT LOCATIONS.
- SEE SHEET S-1 FOR ABBREVIATIONS & LEGEND (SYMBOLS).

KEY NOTES: (Kn)

- K1. L6x6x1/2 OVERFRAMING AS REQUIRED. CONTINUE METAL DECK BELOW OVERFRAMING. CONNECT METAL DECK TOGETHER AT RIDGE w/ A #16 GA x 6" WIDE & #12 SCREWS @ 12"oc EA SIDE.



CLERESTORY FRAMING PLAN

1/8" = 1'-0"

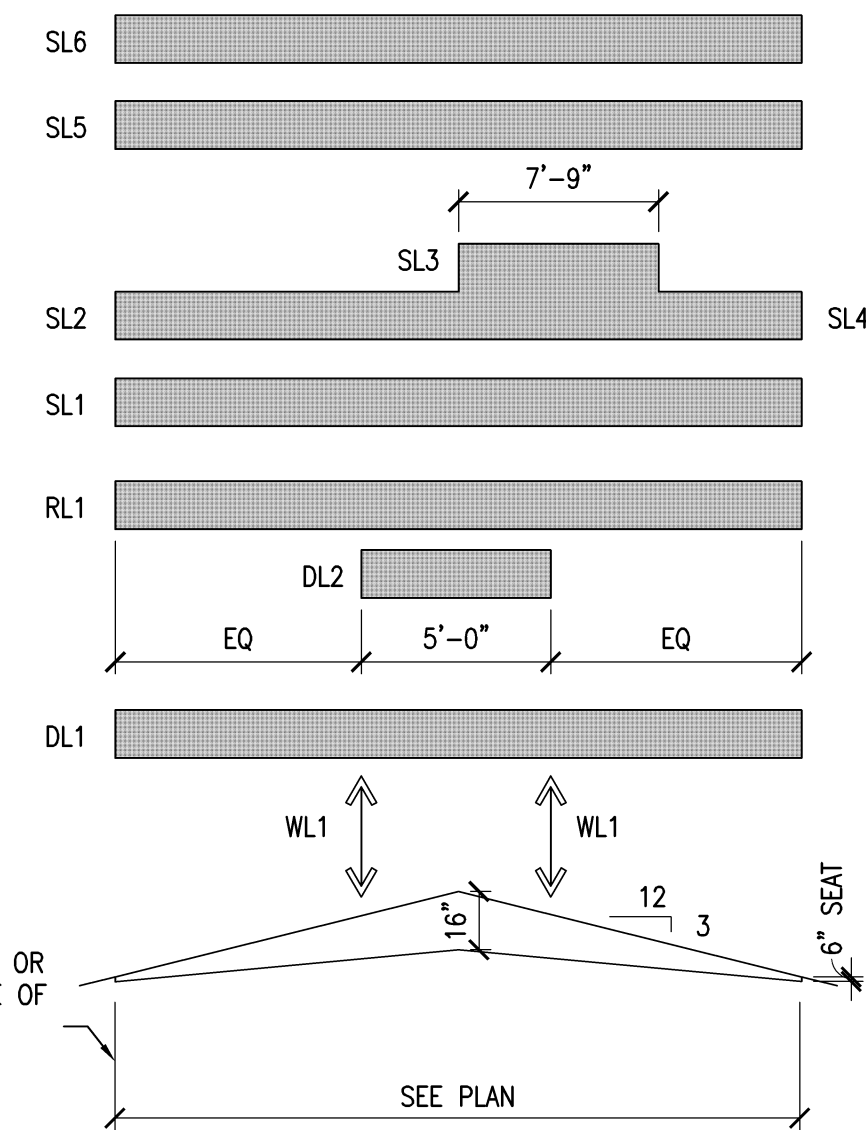
NOTES:

1. SHADING INDICATES SHEAR WALL, SEE SHEAR WALL DETAIL & SHEAR WALL SCHEDULE ON SHEET S-4.
2. DOORS AND WINDOWS ARE SHOWN IN APPROXIMATE LOCATIONS, SEE ARCHITECTURAL DRAWINGS FOR EXACT LOCATIONS.
3. SEE SHEET S-1 FOR ABBREVIATIONS & LEGEND (SYMBOLS).

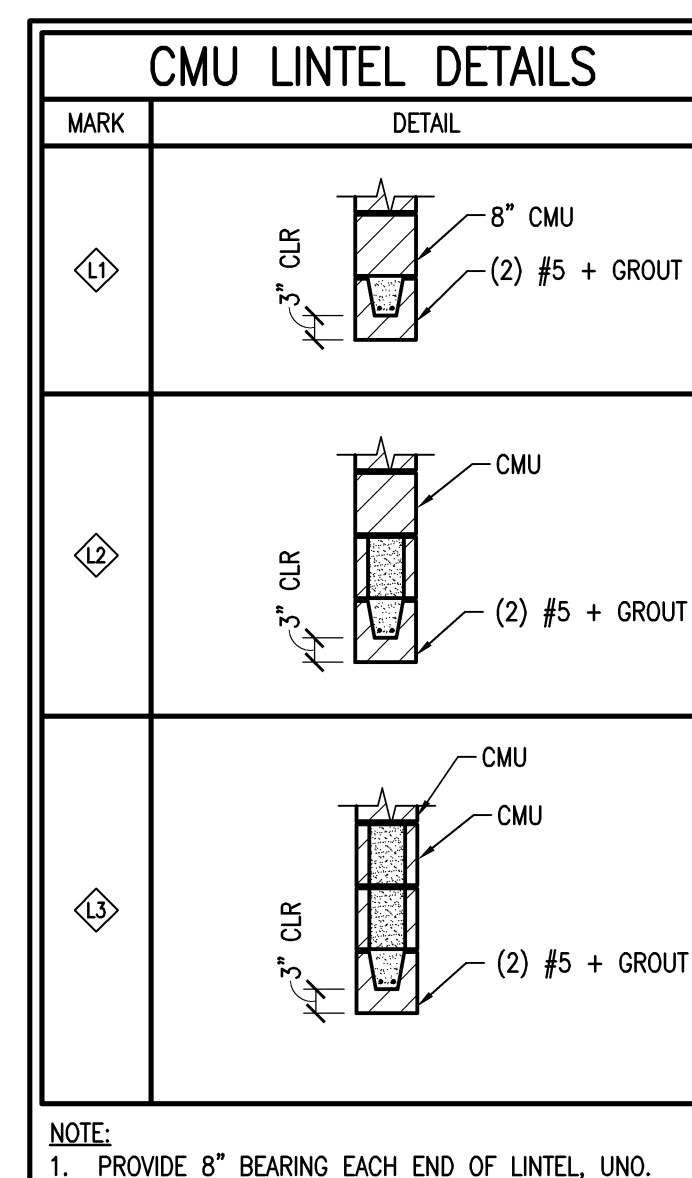
SPECIAL JOIST LOADING DIAGRAM

Joist Loading Diagram	Dead Load (plf)		Roof Live Load (plf)	Snow Load (plf)						Wind Load (kip)		
	DL1	DL2		Case 1	Case 2	Case 3	Case 4	Case 5	Case 6			
Joist Mark	DL1	DL2	RL1	SL1	SL2	SL3	SL4	SL5	SL6	SL7	SL8	WL1
GSP1	130	130	120	105	35	175	105	15				1
GSP2	130	130	120	105	35	175	105		35	200		1
GSP3	130		120	105	35	175	105					1
GSP4	130	130	120	105	35	175	105	15				1
GSP5	130		120	105	35	175	105				150	1
GSP6	130	130	120	105	35	175	105		35		150	1
GSP7	130	130	120	105	35	175	105		35			1
GSP8	130		120	105	35	175	105					1
GSP9	130		120	105	35	175	105					1
GSP10	130		120	105	35	175	105					1

- Note:**
1. Gable joists shall be designed in accordance with the appropriate load combinations per the specified building code. See general structural notes for the design net uplift due to wind.
 2. Loads shown are service loads (unfactored).
 3. Snow load case 1 is balanced, 2 is unbalanced, 3 sliding, 4 sliding, 5 drift, and 6 drift. Case 2 need not be combined with any cases. Case 1 need not be combined with more than one of 3, 4, 5, or 6. Design for worst case, balanced or unbalanced.
 4. Wind point loads are applied where indicated on the diagram. Point load may be upward or downward force.



NOTE: JOISTS SHALL BE DESIGNED IN ACCORDANCE WITH THE APPROPRIATE LOAD COMBINATIONS PER THE REFERENCED BUILDING CODE. SEE GENERAL STRUCTURAL NOTES FOR DESIGN NET UPLIFT DUE TO WIND.



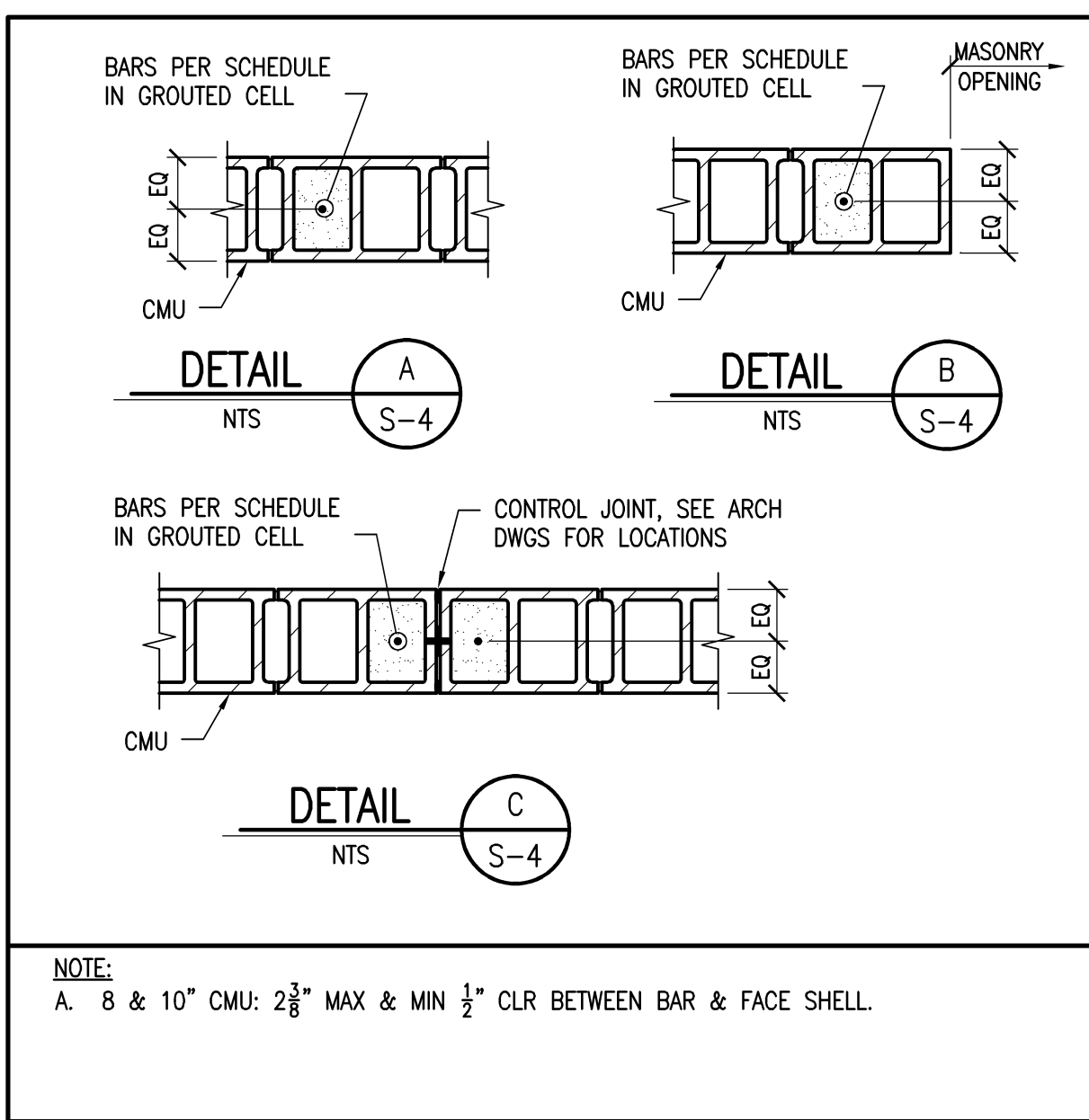
NOTE: 1. PROVIDE 8" BEARING EACH END OF LINTEL, UNO.

CMU WALL REINFORCING SCHEDULE

MARK	VERTICAL REINFORCING BAR SIZE @ SPA	CMU SIZE	DETAIL
W1	#5 @ 48"oc	8	A/S-2
W2	#5 @ 24"oc	8	A/S-2
W3	#5 @ 32"oc	8	A/S-2
W4	#5 @ 8"oc	8	A/S-2

NOTES:

1. [Symbol] - INDICATES VERTICAL WALL REINFORCING.
2. GROUT ALL CELLS CONTAINING REINFORCING SOID.
3. REINFORCING TO BE PLACED IN CENTER OF GROUDED CELL UNLESS NOTED OTHERWISE.
4. DOWEL TO MATCH SIZE & SPACING SHOWN IN SCHEDULE. EXTEND DOWEL OR BENT BAR OUT OF CONCRETE WALL OR FOOTING TO PROVIDE LAP WITH EACH CMU VERTICAL REINFORCING BAR. SEE RELATING SECTION FOR EXACT DETAIL.
5. ALL WALLS NOT NOTED WITH [Symbol] ON PLAN, REINFORCE WITH #5 VERT @ 48"oc, CENTERED [Symbol].
6. UNLESS NOTED OTHERWISE, PROVIDE (1) #5 AT ALL CORNERS, (1) #5 WITHIN 8" OF EACH SIDE OF OPENINGS, (1) #5 WITHIN 8" OF EACH SIDE OF MOVEMENT JOINTS, & (1) #5 WITHIN 8" OF THE ENDS OF WALLS.



NOTE: A. 8 & 10" CMU: 2 3/8" MAX & MIN 1/2" CLR BETWEEN BAR & FACE SHELL.

COPYRIGHT © 2011
THIS DOCUMENT IS THE PRODUCT AND EXCLUSIVE PROPERTY OF STEVEN SCHAEFER ASSOCIATES, INC. NEITHER THE DOCUMENT NOR THE INFORMATION IT CONTAINS MAY BE COPIED OR USED FOR OTHER THAN THE SPECIFIC PURPOSE FOR WHICH IT WAS PREPARED, WITHOUT THE WRITTEN CONSENT OF STEVEN SCHAEFER ASSOCIATES, INC.

Steven Schaefer Associates, Inc.
Consulting Structural Engineers
19308 Schmaer Drive
Lawrenceburg, IN 47025
Phone: 812-852-3300 Fax: 812-852-5450
www.ssastructural.com

DATE: 09/13/2011
PROJECT: NRW/GJB
DRAWING NO: 1118.55
FILE: 01fp1855.dwg

REVISIONS: 09/13/2011 PERMIT

ROOF & CLERESTORY FRAMING PLANS
HIDDEN VALLEY POOL HOUSE
19308 Schmaer Drive
Lawrenceburg, IN 47025

Sheet Title: 0
Project Title: S-2 OF 0